



**CORAL TRIANGLE
INITIATIVE**
ON CORAL REEFS, FISHERIES AND FOOD SECURITY
INDONESIA

Strengthening the Management Capacity of Marine Protected Areas in Indonesia – School for Marine Resources Conservation and Management

Project Duration:

5 years (2013 - 2017)

Proponent:

Ministry of Marine Affairs and Fisheries

Objective:

Enable 30% of MPA System in Indonesia to be managed under the leadership of qualified managers by 2015.

Beneficiaries:

MPA managers from the existing MPAs System in Indonesia at the national and local levels, local managers in marine resource management related sectors, key stakeholders of MPAs, and MPA Network in CT Region. The project will ensure that the school infrastructures, the field training facilities and the school operation at its pilot phase will be within the acceptable professional quality and the school system will be well aligned with the career system in the government/agencies structures.

Funding:

The total funding needed for the establishment and management of SMRCM system (including its MPA Learning sites) for 1st 5 years is approximately US\$ 38,600,000,-, in which Gol contribution is about US\$ 26,800,00,-. The requested contribution from donors and partners is US\$ 11,800,000,-. When the school is ready to enrolled international students, particularly from CT countries, their tuition fees will also of support to the school operation.

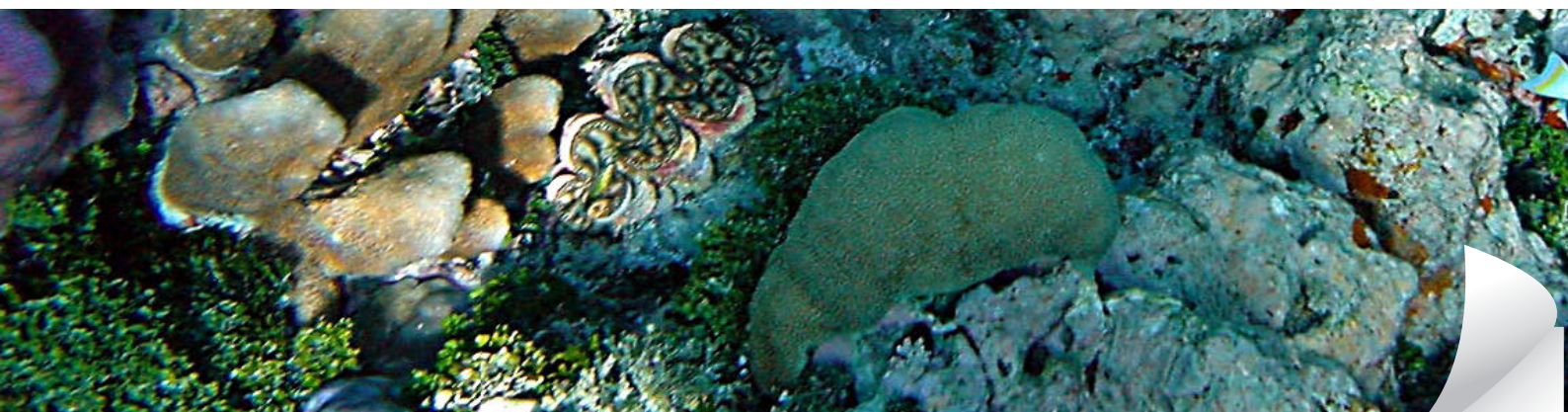


A. Brief Background

Brief Background: The Government of Indonesia has realized the importance of marine protected areas for protection of marine biodiversity and for sustainable fisheries. Currently about 45 new MPAs are in the process of establishment throughout Indonesia. Together with existing MPAs this will make a total of 76 MPAs. The GOI is committed to protecting 20 million ha by 2020 (from the current MPAs area of more than 14 million ha), which will require about 90 MPAs of various sizes by 2020. Assuming that each MPA will need at least 3 well-qualified managers, we will need at least 270 new managers and 100 certified technical officers by 2020. Those officials will be required to be positioned at various levels of MPA management, from the field management levels to the provincial and central governments. The upper level government oversight is especially important to support the policy, planning and supervision of MPA management. SMRCM is

specifically designed to enhance the capacity of its students in MPA management in terms of knowledge, skills, attitude, field leadership, motivation and networking. To optimize the education and training effectiveness and cohesiveness, the school will be organized under the concept of a training camp. The study period will be for 9 months and will be considered as a 32 credit semester (SKS). It will consist of 8 SKS of class sessions (theory) on fisheries and MPA management, 20 SKS of field work and 4 SKS on compilation of lessons learned (at least three cases of fisheries and MPA management). An optional, additional, study period will be offered to those eligible to pursue further academic degree equivalents for a Master Degree program (equal to S2 degree) on 'Fisheries and MPA management. For those in the Master's Degree program an additional 3 months study period will be required, bringing the total program to one 1 year (12 months). This would

bring the total to 42 credits for the semester (SKS). It will be attached under a regular program of the Faculty of Post Graduate Program at a qualified university(ies). To assure that education responds to the situation in the field, the formal component of SMRCM will be aligned with practical field studies at three sites to be used as field learning laboratories. It is envisaged that these sites will include Nusa Penida MPA, Savu Sea MNP, and Wakatobi NP. Through the formal education process and field based learning, the SMRCM will develop a cadre of managers with the knowledge, skills, and abilities to effectively manage MPAs. The importance of stakeholder involvement and participatory decision making is recognized, and a focus will be on aligning traditional community wisdom into MPA management. In addition to creating a center for professional training in MPA management and offering a Master's program, SMRCM is an innovative program for the CTI, and a commitment by Indonesia





to develop a CTI school for MPA managers, to establish a CTI learning network, to develop and standardize MPA training modules and to implement regular training opportunities. This program has received positive support by all CT countries. The target area includes 4.5 million hectares of MPAs, and it is anticipated that 150 MPA managers will be trained during the life of project.

Components:

The project will support the establishment of SMRCM through the following activities:

A. The development of the Infrastructure for the School for Marine Resources Conservation and Management

The target audience for this component are the agencies managing MPAs and capacity building in marine conservation. The project will include:

1. Construction of the school building and facilities.
2. Development of school curriculums and training modules.
3. Synchronization of the

- student Recruitment and Placement system
4. Provision of school facilities and equipment
5. Selection and mobilization of school instructors and staff.
6. Development of a school logistics support system
7. Development of a school administration and financial system.

B. The management of the Pilot Phase for School for Marine Resources Conservation and Management

T

he target audience for this component is the agencies managing MPAs and capacity building in marine conservation students and key stakeholders. The project will include:

1. Selection and recruitment of students
2. Implementation of the school management and curriculum and course enrollment
3. Running 1st – 3rd batches of school courses.

C. Strengthening the management of selected Learning Sites for the school field training bases

The target audience for this component are the agencies managing MPAs and capacity building in marine conservation, students and key stakeholders. The project will include:

1. Development and adoption of selection criteria for potential MPAs learning sites
2. Selection of MPAs Learning sites
3. Development of the management plans for MPAs learning sites
4. Provision and adoption of programs and facilities for MPAs learning sites
5. Creation of a management body for MPA learning sites
6. Development of curriculum for on site training
7. Support for the development of a legal framework and management program for learning sites
8. Support for MPA learning sites operational budget for first 5 years

Contact Information:

Suseno Sukoyono

CTI CFF National Coordinator - Ministry of Marine Affairs and Fisheries
CTI-CFF National Secretariat, Mina Bahari II Lt.17 Jl. Medan Merdeka Timur 16, Jakarta 10110
ncc_ctiindonesia@yahoo.com or iswari2301@gmail.com
Telp +62 21 3519070 ext. 1733 Fax +62 21 3860532



Budget Distribution:

Components/Activities	Total Cost in US\$	Gov. Investment	Request
Component A: The development of the Infrastructures for School for Marine Resources Conservation and Management			
1. Construction of the school building and facilities.	5,000,000	5,000,000	
2. Development of the school curriculum and training modules.	1,000,000	500,000	500,000
3.Synchronization of the student Recruitment and Placement system	250,000	150,000	100,000
4.Provision of school facilities and equipments	15,000,000	12,500,000	2,500,000
5.School instructors and staffing selection and mobilization	1,000,000	500,000	500,000
6.Development of school logistics support system	1,000,000	500,000	500,000
7. Development of the school administration and financial system.	500,000	400,000	100,000
Total A	23,750,000	19,550,000	4,200,000
Component B: The management of Pilot Phase for School for Marine Resources Conservation and Management			
1.Selection and recruitment of students	300,000	200,000	100,000
2.Implementation of the school management and curricullum courses enrollment	3,000,000	1,500,000	1,500,000
3.Running 1st – 3rd batches of school courses.	2,500,000	1,000,000	1,500,000
Total B	5,800,000	2,700,000	3,100,000
Component C: Strengthening the management of selected Learning Sites for the school field training bases			
1.Development and adoption the selection criteria for potential MPAs learning sites	100,000	50,000	50,000
2.Selection of MPAs Learning sites	100,000	50,000	50,000
3.Development of the management plans for MPAs learning sites	250,000	150,000	100,000
4.Provision and adoption of programs and facilities for MPAs learning sites	2,000,000	1,000,000	1,000,000
5.Development and implementation of Collaborative Management body and program for MPA learning sites	1,000,000	500,000	500,000
6.Development of curriculum for on site training	500,000	250,000	250,000
7.Support for the development of legal framework and management program for learning sites	100,000	50,000	50,000
8.Support for MPA learning sites operational budget for 1st 5 years	5,000,000	2,500,000	2,500,000
Total C	9,050,000	4,550,000	4,500,000
Total	38,600,000	26,800,000	11,800,000

Note: Other partnering agencies and funding institutions are expected to jointly contribute based on their specific expertise and resources capacities. Among others those are development of the school design and curricula, learning site field capacity building program scheme, instructors/trainers, facilitation of competencies certification, program networking and regional/international alignment, capacity building tools and modules. Under the proposed project a five year joint collaboration scheme is developed, starting from the establishment of the school (2 years), to its fully operational management.