

THE PHILIPPINES



**CORAL TRIANGLE
INITIATIVE**
ON CORAL REEFS, FISHERIES
AND FOOD SECURITY

SOM13

SENIOR OFFICIALS' MEETING
MANILA, 29 - 30 NOVEMBER 2017

PROGRAM SERVICES: PLAN OF ACTIONS

Sharifah Nora Syed Ibrahim, PhD
Deputy Executive Director – Program
Services

OUTLINE

- INTRODUCTION
- OVERVIEW Program Services
- POTENTIAL FUNDING: e.g. GCF, GEF, IMO
- CHALLENGES for RPOA Implementation
- STRATEGIES (PLAN OF ACTIONS)

OVERVIEW PROGRAM SERVICES

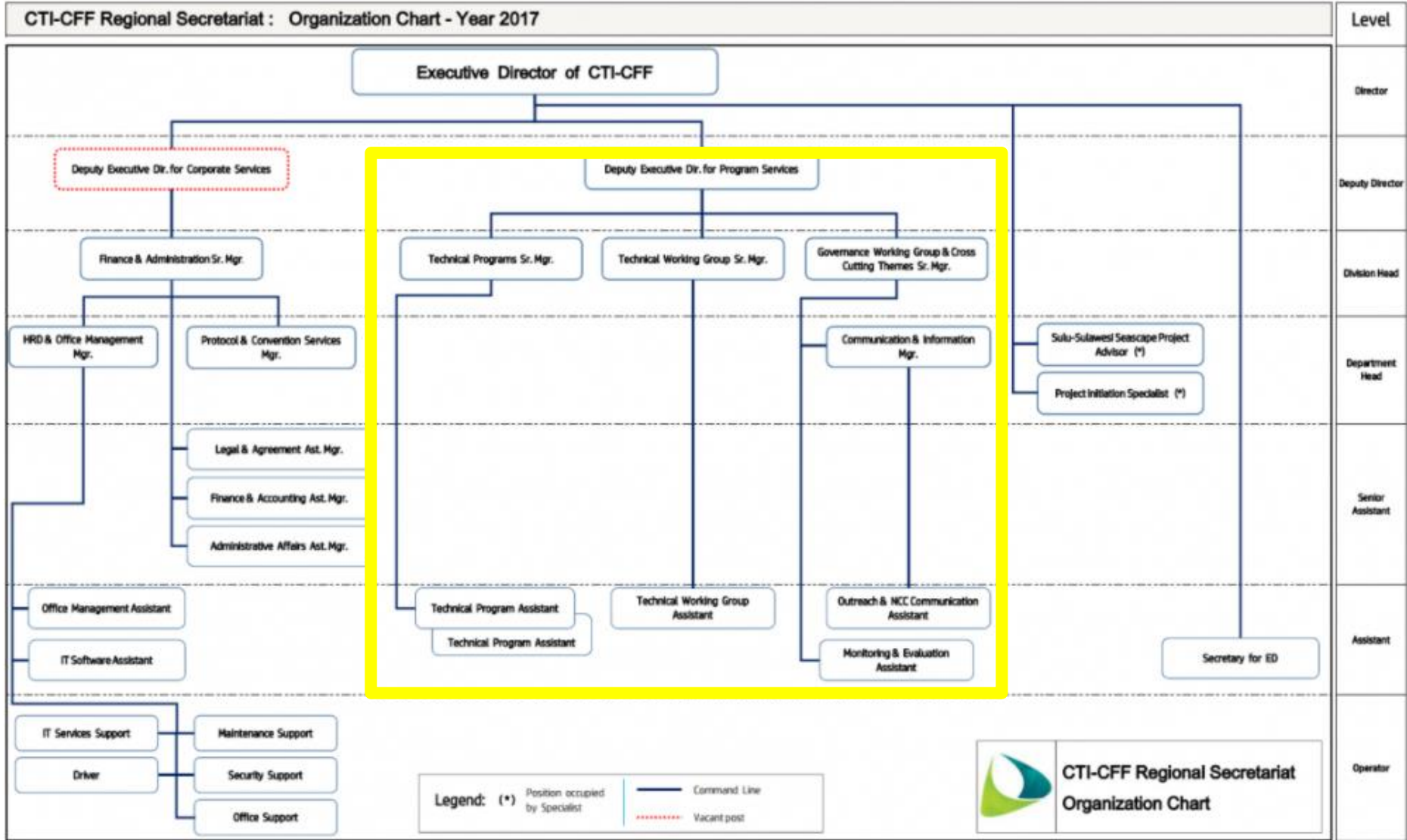
- Organizational Structure
- (accessed from CTI website: 24 Nov. 2017)

INTRODUCTION

- **Staff Regulations**
- **Regulation 5 (3) (i)-(vii) : DED Program Services**

DED PS **shall** be responsible for developing & managing programs for the implementation of the RPOA, including:

- i) Develop **networks with CTI Partners** and stakeholders;
- ii) Facilitate inclusion of **cross cutting issues**;
- iii) Manage public relations, outreach and marketing;
- iv) Facilitate **mobilization of resources**;
- v) coordinate **Monitoring & Evaluation (M&E) of programs**;
- vi) coordinate **capacity development** activities;
- vii) coordinate information and **knowledge management**.



1. TWGs

AIDE MEMOIR TWGs follows 5 RPOA Goals, chaired by countries reps.

With a Head of Division (Ms. Astrid Lim).

- GOAL 1 Seascape
- GOAL 2 EAFM
- GOAL 3 MPA
- GOAL 4 CCA
- GOAL 5 Threatened Spp.

2. Technical Programs

**AIDE MEMOIR: Technical Program Division
(Dr. Muhammad Lukman).**

Covers some big scale projects.

3. Governance

Covers CMWG, FRWG, MEWG , CCT, WLF, RBF

With a Head of Division (Ms. Jasmin Saad).

Crucial to ensure proper RPOA implementation

As it covers also inter alia

- Cross cutting Themes (DED PS responsibilities)
- Monitoring & Evaluation (DED PS responsibilities)

POTENTIAL FUNDING

- GCF
- GEF
- IMO
- etc

POTENTIAL FUNDING: GCF (= / GEF)

Application Stage 1: Institutional Assessment and Completeness Check

- Section I: Background and **Track Record**
- Section III: Scope and Funds Requested
- **Section IV: Basic fiduciary criteria**
 - = Transparency and accountability
(fraud cases, corruption, ethics code, internal auditor, audit committee, whistle blower)
- **Section V: Specialized fiduciary criteria**
 - = Transparent grant awarding mechanism etc
(TOR evaluation committee, procedures, External auditors report)
- **Section VI: Environmental and Social Safeguards**
 - (plus organizational capacity and competency, M&Review, performance evaluation, external communications from public, etc)
- Section VII: **Gender** (competencies to apply GCF Gender Policy, CC)

POTENTIAL FUNDING: IMO

- RPOA Goal 1: Seascape
 - Goal1 Target 1: specifically mentioned PSSA
- TWG: Seascape
 - Seascape General and Regional Framework
 - Identified maritime/shipping activities as serious with impacts on environment and resources

IMO: active in maritime/shipping regulations (SDG 14, 13, 5)

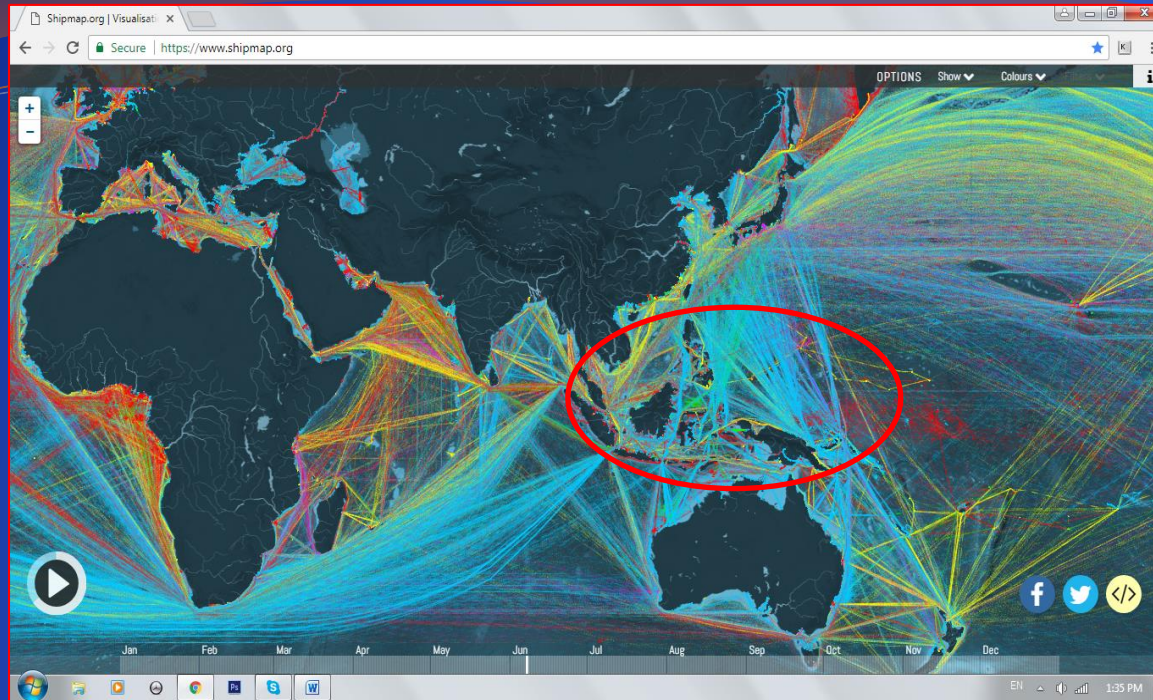
I made contact with IMO and it has expressed high interest to become a development partner or to fund PSSA projects

Coral Triangle Initiative

RPOA Goal 1 (Seascape), Target 1 (Seascape Designation priority), *Regional Action 2* (joint investment plans and **PSSA**); Target 2 (resources in priority seascapes sust managed), *Regional Action 1* (general model for sust mgmt., and **PSSA**)



NPOA Malaysia: Goal 1 (Seascape), Target 1 (Priority Seascape), National Action 3 (ID and assess **PSSA** within Msian priority seascape) (with Output as PSSAs delineated, & enhanced sci of PSSA; Indicators as **# of PSSAs nominated** to IMO, # of sci papers/reports, database on PSSA available to public; target 2012; actors as NOD/MOSTI, DoF, DMPM, Sabah Parks, Unis, DTCP, DTRP, Marine Dept, FRI).



SHIPPING/ MARITIME

- Busy shipping traffic, seaborne trade linking East and West, Indian and Pacific oceans

- in AW, TS, CZ, EEZ, HS

- including choke points: straits, SUINs, ASLs

- in SCS and Coral Triangle region

- SCS is semi enclosed sea (UNCLOS)



* Ecotourism cruise ship MV Caledonia Sky grounded at Raja Ampat MP, Indonesia



* USS Guardian grounded at Tubbataha RNP, Philippines

CCA & MARITIME/SHIPPING



- To increase marine ecosystem resilience, apart from reducing GHGs, other stressors must be reduced e.g.
 - - overfishing, destructive fishing
 - - LBSM Pollution
 - - Shipping-based damage
 - * Pollution (operational and accidental discharges),
 - * *Physical damage (groundings; collisions with endangered and threatened species such as dugongs, whales and turtles)*
 - * Introduction of Invasive Species (ballast)

PSSA

Definition: Particularly Sensitive Sea Area

“an area that needs special protection through action by IMO because of its significance for recognized ecological, socio-economic, or scientific attributes where such attributes may be vulnerable to damage by **international shipping activities.**”

source: Revised guidelines for the identification and designation of Particularly Sensitive Sea Areas (PSSAs) (resolution A.982(24) 2005 and Amendments (2015) (MEPC.267(68))

CHALLENGES in RPOA Implementation

- Need more funding
- capacity building

STRATEGIES (Internal)

1. REBUILD TRUST AND CONFIDENCE in CTI BY

- * BEING TRANSPARENT,
- * ADHERE TO RULES AND REGULATIONS
- * BROAD-BASED SECRETARIAT
- * FOLLOWING ORGANIZATIONAL STRUCTURE
- * Consider future Strategic Plan

2. RPOA Review (by neutral professional consultant)

STRATEGIES (external)

As CT is the core of global marine biodiversity, and to attract more funds including from ecotourism, it is strategic to:

Obtain international recognition of CT region/s via designation as:

- UNESCO World Marine Heritage Site
- Ramsar Site
- MARPOL Special Area
- FAO Vulnerable Area
- IMO PSSA

(PSSA specified in RPOA Goal 1 but also applicable to Goals 2-5)

TERIMA KASIH - MARAMING SALAMAT - TANK IU
OBRIGADO- TAGIO TUMAS

