



Earth observation and the space sector to support coral ecosystems

A primer for the CTI-CFF

Oct 2023

SpaceTec Partners GmbH

Rumfordstr. 10
80469 Munich
Germany

www.spacetec.partners

SpaceTec Partners SRL

Avenue Louise 89
1050 Brussels
Belgium

CONFIDENTIAL

Agenda

Introductions: SpaceTec Partners, DG INTPA, and the EORED project

Overview: EU funding and objectives

Use case snapshot: ready Copernicus tools

Introduction to SpaceTec Partners

Focus



At the cutting-edge

Space

and adjacent sectors (AI, mobility, robotics, security, defence ...)

Structure



Agile, versatile, and independent

100%

European, privately owned by the partners

3 practices
Strategy
Innovation
Market
Development

Locations



Situated in major European hotspots

2 Offices
in Munich & Brussels

Hubs in London, Seoul, Copenhagen, Prague, Vienna

Team



International, diverse, multi-cultural

45+ professionals with management consulting and industry expertise

20 Nationalities

18 Languages

Heritage



Reputable and trusted

15 years in the market

100+ institutional and commercial clients

12 years in international cooperation

SpaceTec Partners' team consists of seasoned space professionals

Partners



Rainer Horn
Managing Partner
Leader of Market Dev. Practice
Formerly director Booz Allen
Hamilton, EY, IBM,
MBA (INSEAD), B.A. Eur. Business



Carla Filotico
Partner
Leader of Strategy Practice
Member of European Innovation Council
(EIC), Ex-Booz & Co & Lead of space team,
Aerospace Engineer



Thomas Tanghe
Partner
Leader of Innovation Practice
Ex-ESA, Deloitte Consulting
Masters in General Management and
Masters in Industrial Engineering

Managers



Annekatrien Debien
EO expert, Ex-ESA, KSAT
Eng. in Earth Observation,
MBA



Felix Rottmann
Ex-Umlaut, Porsche
Consulting,
Aerospace Engineer



Christoph Steimer
Ex-Bain & Company
Industrial Engineer



Florentyna Smith
Innovation expert, Ex-PwC,
Bachelor of Commerce,
Major in innovation

EORED Project



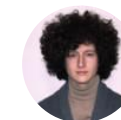
Michael Hyland
EO expert, Sustainability
MSc.



Carolina Botelho
Aerospace Engineer,
PhD Candidate



Gaetano Caccavallo
Aerospace Engineer
MSc.



Nicolas Ayala Arboleda
Politics and Technology
MSc.

SpaceTec has a history of partnerships in Asia and a robust network



- Developed Indonesia country profiles and briefing material
- Engaged with maritime solutions providers
- Met plastic activists and local Indonesian Stakeholders

The Copernicus Marine Service gives you access to ocean information through:

- Ocean product catalogue
- Ocean monitoring indicators
- Ocean State report, annual analysis on the state of the ocean



SpaceTec's network includes **many players in Asia's blue economy**. Pictured: SpaceTec Partner's Rainer Horn explaining solutions to VIP guests at the Our Ocean Conference

SpaceTec coordinated GNSS.Asia, a multi-year industrial cooperation across continents. Over 50 events, 16 business partnerships, and a hackathon **established a brand of trusted cooperation**.



SpaceTec has a history of partnerships in Asia and a robust network



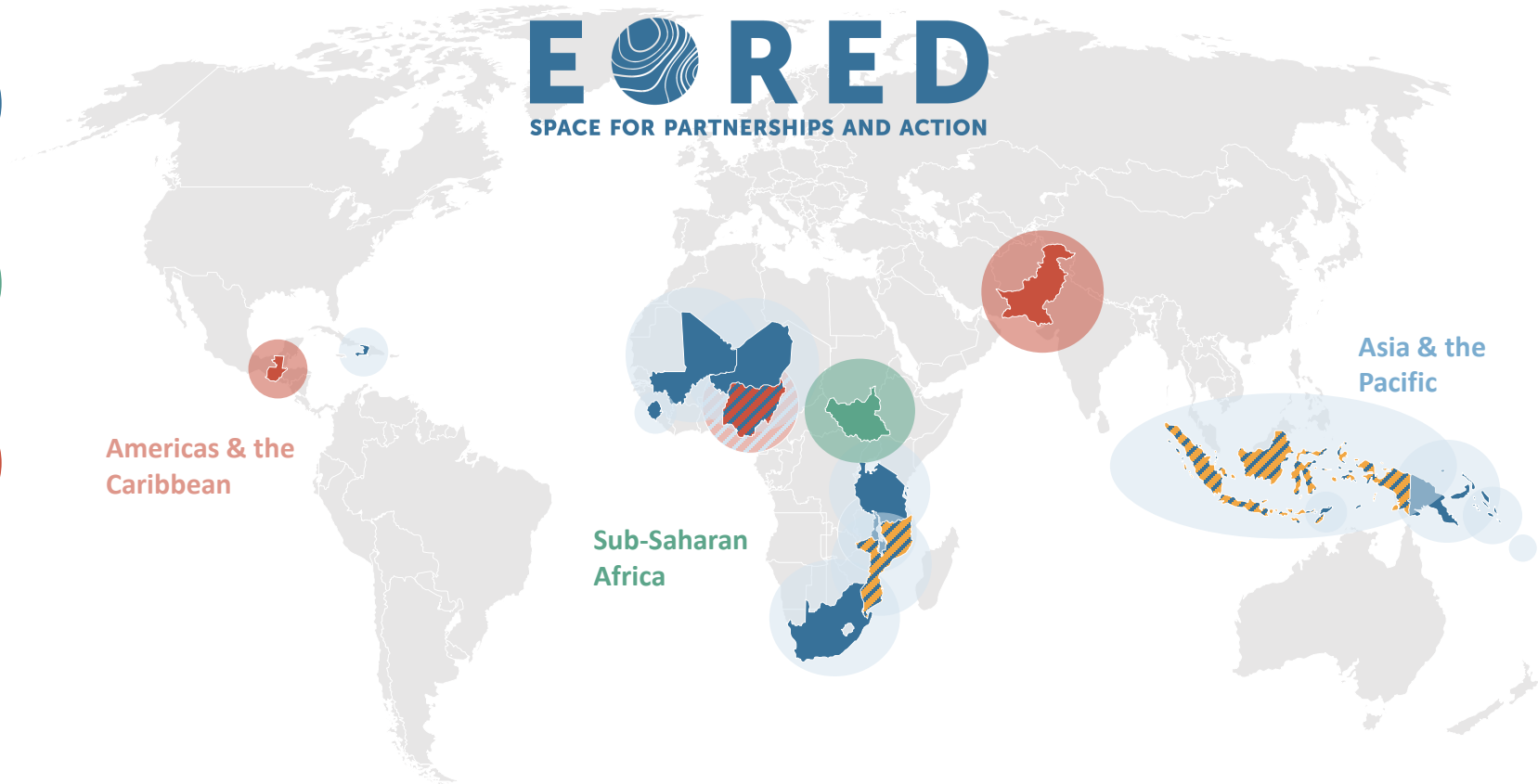
SpaceTec's has **close connections to the recent Copernicus Agreement** signed in the Philippines

Our team and network behind a proposal to reduce marine plastic waste in SE Asia **united governments, NGOs, and IGOs**



Introduction to EORED space for partnerships and action

EORED is a global portfolio built over the last 18 months



Ready, relevant, scalable and transferable

The partnership with the CTI-CFF

We collaborate with local partners to improve our success



DG INTPA

*Directorate General For
International Partnerships*

One of many directorates of the European Commission. Our client, INTPA F5, is responsible for digitalisation and innovation

INTPA and country Delegations formulate the **EU's international partnership and development policy**

SpaceTec Partners

*Consultancy assisting clients as
specialists in the space industry*

+15 years of experience across the entire EU space ecosystem

Contracted by INTPA to create use cases of space for development across the globe

Objective: “provide support to the design of an **implementation plan of Copernicus data in the Coral Triangle**”

CTI-CFF

Local institution

Chosen partner for **providing local input** to increase the likelihood of plans leading to funded actions

Funds are available to member countries of the CTI

EU delegations are part of our decision process to access funding. Priority areas and budgets are set through 2027.

Total funding (€Mil.) of CTI-CFF partners by MIP priority area*

Preliminary desired outcomes

	Coop. Facility	Sustainable econ.	Governance & sustain.	Climate action	Human dev./peace
Current Chair Timor- Leste		25			
Indonesia	20		22		
Malaysia	20				
Philippines		90	50		
Solomon Islands*	6	45		50	10
Papua New Guinea		65	20		23.0

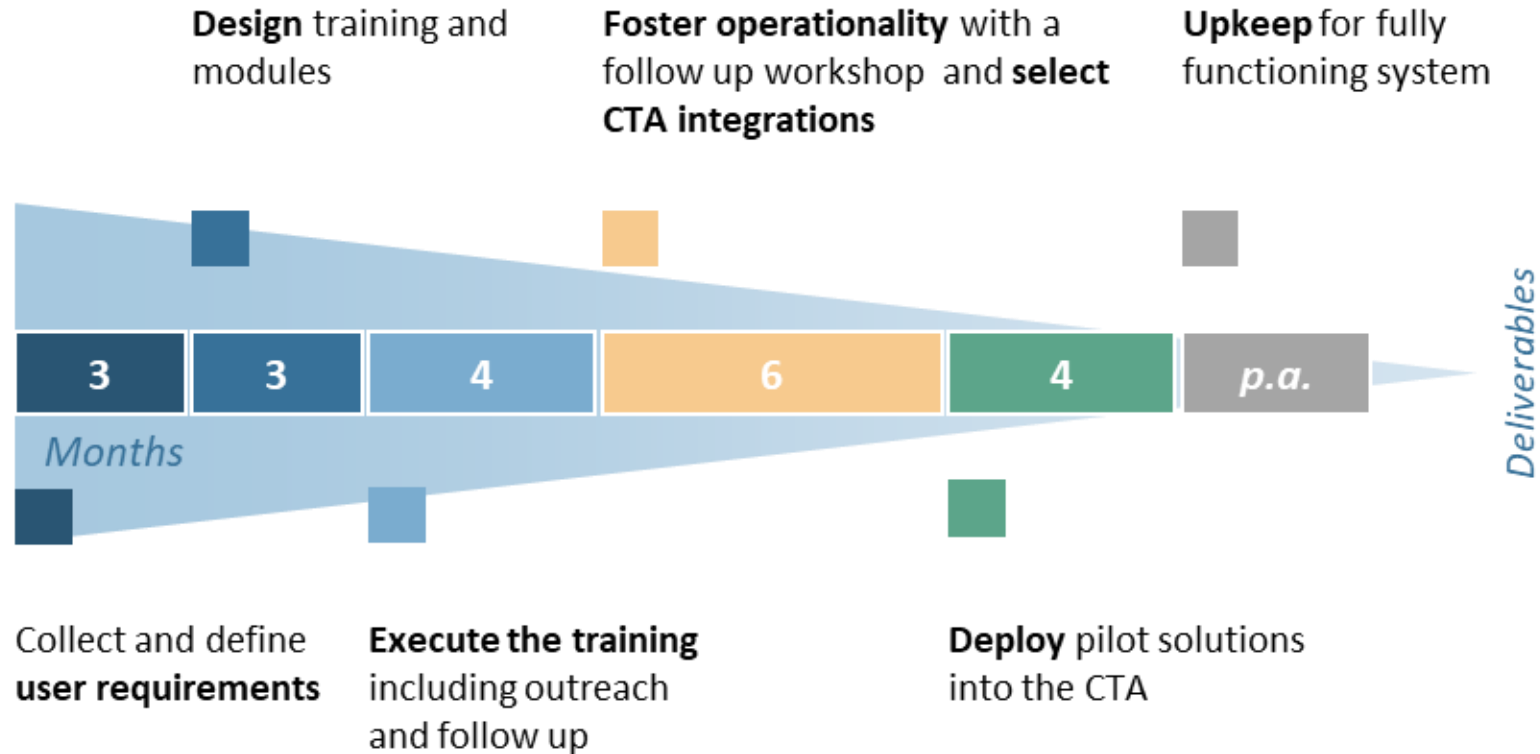
- Stakeholder Capacity Development Plan
- Training & Online Course
- Use Case for CTA Integration

*Multi-country MIP of Cook Islands, Fiji, Kiribati, Marshall Islands, Micronesia, Nauru, Niue, Palau, Samoa, Solomon Islands, Tonga, Tuvalu, Vanuatu

**Funding rounded to nearest 10s

Possible timeline for the initiative. Our goal is to align with RPOA interim

The indicative amount for the initiative is 500k - 1MM EUR



EAFM - Fishery data can be combined with ready tools from Copernicus

The project will begin with matching user needs with existing products and tools. Customisation can be considered.

CTI In situ fishery data

Models and correlations

Copernicus Marine Service Ecosystem Tools and Data

Chemistry

Blue ocean

- Temperature
- Salinity
- Currents
- Waves
- Sea surface elevation
- Surface winds

Green Ocean

- Nekton
- Plankton
- Organic carbon
- Nutrient
- Oxygen
- Carbonate systems
- Optics

Structure

Living

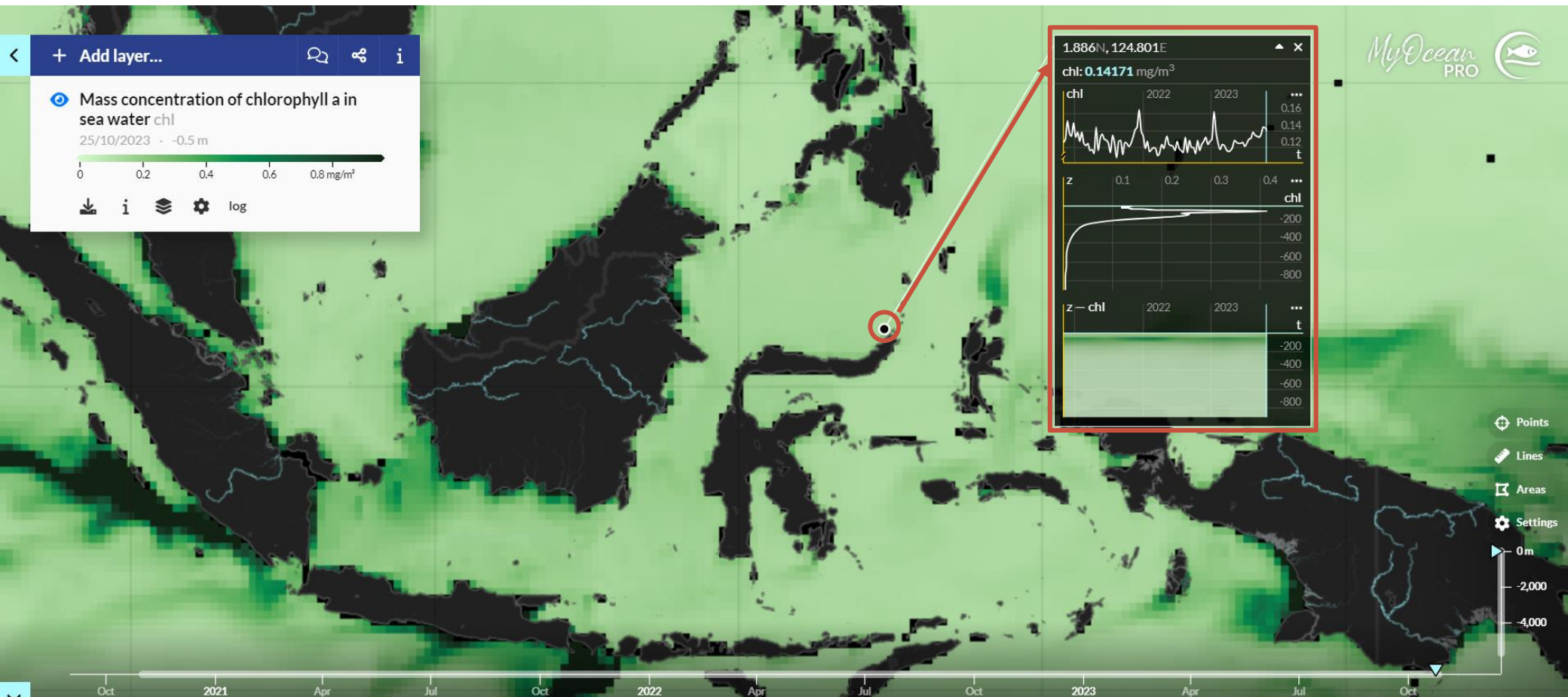
- Coastal ecosystems
- Seagrass
- Species
- Productivity
- Coral
- Mangroves

Non-living

- Bathymetry
- Evaporation
- Hydrology
- Coastal structure
- Human impact and engineering

Snapshot of the Copernicus Marine Service Ocean Viewer Portal

Link: https://data.marine.copernicus.eu/product/GLOBAL_ANALYSIS_FORECAST_BIO_001_028/description



We look forward to our further collaboration!



EORED@spacetec.partners

Miguel Rocha de Gouveia -- DG INTPA

Rainer Horn -- Managing Partner, SpaceTec Partners

Michael Hylind -- Senior Consultant, SpaceTec Partners

Nicolas Ayala Arboleda -- Consultant, SpaceTec Partners