



USAID
FROM THE AMERICAN PEOPLE

Sustainable Fish Asia (SUFIA) Local Capacity Development (LCD)
Activity

Climate Change Adaptation Executive Course I Activity Report

July 28, 2022

Submitted: August 4, 2022

Revision: August 9, 2022

Sustainable Fish Asia (SUFIA) Local Capacity Development (LCD) Activity

Climate Change Adaptation Executive Course I

Activity Report

July 28, 2022

Prepared for:

Sustainable Fish Asia Local Capacity Development Activity

RTI International

208 Wireless Road Bldg.

Wireless Road, Lumpini, Pathumwan

Bangkok 10330 Thailand

RTI International

3040 East Cornwallis Road

Post Office Box 12194

Research Triangle Park, NC 27709-2194

Prepared by:

Rini Wahyu Hariyani

RIWANI Globe

www.rivaniglobe.com

rini@rivaniglobe.com

This document was produced by Rini Wahyu Hariyani for review by USAID Sustainable Fish Asia Local Capacity Development Activity implemented by RTI International. It was made possible by the support of the American people through the United States Agency for International Development (USAID).

Table of Contents

Executive Summary	1
1. Introduction and Objectives of the Course	2
2. Agenda/Topics/Program	3
3. Session Details	4
3.1 Session 1: Orientation on CTI-CFF Initiatives	4
3.2 Session 2: Climate Change: Threats to the Environment and Social Economics.....	4
3.3 Session 3: Gender and Climate Change Adaptation	5
3.4 Session 4: Group Discussion on Climate Change Issues Faced and Recommendations	5
3.5 Session 5: Plenary Presentation and Reflections.....	6
4. Participants' Training Assessments	6
5. Comments and Recommendations	8
Annexes	9
Annex 1. List of Participants	9
Annex 2. Group and Training Photos	11
Annex 3. Pre-Assessment Results	13
Annex 4. Post-Event Evaluation Results	14
Annex 5. Results of the Group Discussions on Climate Change Issues Faced and Recommendations	16

Executive Summary

The USAID Sustainable Fish Asia (SUFIA) Local Capacity Development (LCD) Activity is supporting the Coral Triangle Initiative on Coral Reefs, Fisheries and Food Security (CTI-CFF) to strengthen technical capacities, and in this instance, to support the Climate Change Adaptation Working Group (CCA WG) in organizing an online course on “Climate Change Adaptation Executive Course I” for local leaders in the Coral Triangle region. This is in alignment with the CCA WG workplan 2022 wherein they plan to conduct a course on climate change to those who are in the forefront and make decisions related to their communities’ adaptation to climate change. This online session is designed to equip local chief executives and leaders with the knowledge and understanding of global and regional issues on climate change and how it impacts the coastal communities and the surrounding environment. The local governments are in the front-line in experiencing climate change impacts and they also possess the critical responsibility of implementing actions to address this issue. Moreover, this webinar training also aims to provide basic scientific knowledge as bases in developing appropriate and stronger policies, ordinances or regulations in order to improve environmental governance and enhance their role in reducing the vulnerability of the community and its environment in general.

The online training on Climate Change Adaptation Executive Course was conducted on July 28, 2022. It is the last event of SUFIA LCD Activity as the project will close in August 2022. The training was conducted for 3 hours, starting from 09.00 am – 12.00 noon Manado local time. The Consultant Facilitator, Ms. Rini Wahyu Hariyani supported the delivery of the training.

Thirty two individuals (18 women, 13 Men, 1 preferred not to say) participated in the training, coming from the CTI CFF Regional Secretariat, CTI-CFF CCA Working Group, National Coordinating Committees, and development partners. Due to the online nature and the limitation in terms of resources and pandemic, of bringing together local leaders from six countries via the online platform, no representative from the local governments was able to participate.

Several topics were delivered in the training, namely presentations on CTI CFF, Climate Change Threats to the Environment and Social Economics, and Gender and Climate Change Adaptation. Participants were divided into four groups to discuss the topic, Climate Change Issues Faced and Recommendations, after which each group presented their outputs. Prof. Mokbul Ahmad, the technical resource person, provided feedback or comments after the group presentation.

The post-event evaluation revealed that 19% of the participants rated the quality, content and overall process of training as excellent, 52% very good, and 29% good. Participants suggested that the training should be longer.

I. Introduction and Objectives of the Course

The purpose of the USAID Sustainable Fish Asia (SUFIA) Local Capacity Development (LCD) Activity is to facilitate the organizational capacity development of regional fisheries organizations and conduct a regional Private Sector Landscape Assessment of the fisheries sector in Asia. SUFIA LCD is committed to support CTI-CFF and its technical working groups in delivering capacity development services to enhance compliance, performance and viability as a lead regional organization.

USAID SUFIA LCD supported the CTI-CFF's Climate Change Adaptation Working Group in conducting the “**Online Training on Climate Change Adaptation Executive Course I**”, conducted on **July 28, 2022** from **9:00am to 12noon (Manado time)**. This is in alignment of the CCA WG Work Plan 2022 approved during SOM16 in December 2021.

Objectives

The objectives of the training were to enable the participants to:

- Explain global and regional issues on climate change and their impacts on coastal communities and the surrounding environment
- Utilize basic scientific knowledge to inform the development of appropriate and stronger policies, ordinances or regulations for improved environmental governance
- Describe local government's role in reducing the vulnerability of the community and its environment in general
- Discuss climate change issues they are facing and suggest potential solutions

The original intent of this course was to have local government representatives to participate, however due to the limitations of the CCA WG and NCCs to convene representatives from various localities, including the high resource requirements for travel and pandemic restrictions, none from the local governments participated. It is hoped that the 32 participants who attended the training will be able to relay the learnings and information obtained from this training to their local constituents.

2. Agenda/Topics/Program

Online Training
Climate Change Adaptation Executive Course I
July 28, 2022
9:00am – 12:00pm
(Manado local time)

Date/Time	Activity	Resource Person/s
9:00 – 9:30 am	Welcome Remarks Opening Session	Dr. Arlene Nietes Satapornvanit, Project Manager of USAID SUFIA LCD Mr. Gustaaf A. Lumiu, CTI-CFF RS DED
	Introduction of Participants and Overview of the Course Group Photo	Ms. Rini Wahyu, Facilitator
9:30 – 9:45 am	Orientation on CTI-CFF Initiatives	Mr. Md. Anjum Islam CTI-CFF M&E Manager and SUFIA LCD Focal Person
9:45 – 10:20 am	Climate Change Threats to the Environment and Social Economics	Prof. Mokbul Morshed Ahmad, Departments of Development and Sustainability, and Energy, Environment and Climate Change, School of Environment Resources and Development, Asian Institute of Technology, Thailand
10:20 – 10:30 am	Break	
10:30 – 10:45	Gender and Climate Change Adaptation	Video Ms. Novena Rena Parengkuan SUFIA LCD Organizational Development Consultant
10:45 - 11:20 am	Country Specific Group Discussion on Climate Change Issues Faced and Recommendations	CT6 CCA Working Group
11:20 – 11:45 am	Plenary Presentations and Reflections	Ms. Rini Wahyu, Facilitator
11:45 am – 12:00 noon	Wrap-up / Post-Event Assessment* Closing Remarks	Mr. Md. Anjum Islam, CTI-CFF RS Ms. Rini Wahyu, Facilitator

*Certificates of Participation will be sent to participants a few days after the event.

3. Session Details

The training started at 9.10 am while waiting for participants who registered for the course to join online. The event opened with Dr. Arlene Nietes Satapornvanit, Project Manager, USAID SUFIA LCD Activity giving the Welcome Remarks, followed by Mr. Gustaaf A. Lumiu, CTI CFF-RS DED for Corporate Services, who provided the Opening Remarks.

After the opening session, to build a positive learning environment, participants were invited to introduce themselves using Jamboard. The Facilitator invited participants to introduce themselves by writing their name, organization and country, and to express their feeling at the moment. The link to access the jamboard was provided in the chat box.

After the introductions, the Facilitator then explained the objectives and agenda of the training.

3.1 Session 1: Orientation on CTI-CFF Initiatives

This session aimed to introduce CTI-CFF to the participants. This session was presented by Mr. Anjum Islam representing CTI-CFF Executive Director. The presentation talked about the CTI-CFF Organization, the importance of Coral Triangle and the CTI CFF Regional Plan of Action, and Partners. This session aimed to introduce the CTI-CFF Initiative to participants who are new to the Initiatives.

3.2 Session 2: Climate Change: Threats to the Environment and Social Economics

This session was delivered by Prof. Mokbul Morshed Ahmad, who is a professor at the Departments of Development and Sustainability, and Energy, Environment and Climate Change, School of Environment Resources and Development, Asian Institute of Technology, Thailand.

The presentation included

- The challenges from Climate Change
- Threats to our environment
- Threats to socio-economic situation

The session concluded with the following statements:

- Climate change is one of the biggest threats of our time.
- We are still knowing and assessing the impacts of CC in different scenarios based on our 'actions'.
- One of the worst victims of CC are the poor.
- We need to focus on climate science, adaptation and mitigation.

After the presentation, participants asked questions either verbally or by writing them in the chat box. Even though the time allocated for this session has run out, participants were still given opportunities to ask questions, and the Resource Person to respond. This session needed more time for participants to ask questions and share ideas with the resource person. It needs to allocate specific time for Q&A.

3.3 Session 3: Gender and Climate Change Adaptation

Ms. Novena Rena Parengkuan presented this session through a video, Why Gender Matters for Effective Adaptation to Climate Change, produced by NAP Global Network. Through this video, participants were able to learn about gender aspects that need to be considered in climate change adaptation. As in the previous session they have learned about climate change and the impact to the environments and social economics aspect. This video emphasized why gender matters for effective adaptation to climate change.

Participants showed interest in the video and requested for a copy. Ms. Rena shared the link to access the video: <https://youtu.be/luO8phhdfsA>. To improve the session design, a certain time should be allocated for the Facilitator encourage discussion of the video's content to explore deeper regarding the subject learned.

3.4 Session 4: Group Discussion on Climate Change Issues Faced and Recommendations

After all the presentations, time was allocated for a group discussion on climate change issues faced and recommended solutions. Participants were divided into four groups. Each group has more or less members composed of country representatives, RS and development partners.

Participation in the breakout groups was varied, from very active group dynamic to less. For the discussion, SUFIA LCD provided a matrix as a guide for discussion, including What Climate Change issues they faced, location, Who/which group are most impacted by the issues, the recommended actions to address the issues, the responsible entity to best address these issues, and resources needed.

A member from within the groups volunteered to facilitate. Dr. Arlene Satapornvanit from SUFIA LCD, Prof. Mokbul Ahmad and Mr. Joey Pedrajas facilitated in their own groups. The Consultant Facilitator also joined some groups to ensure group members were sharing ideas.

One group was less active due to most of the group members were participating in another meeting that was going on simultaneously. However one participant was able to share his ideas. The other three groups discussed and presented many valuable points.

To improve the group discussion, the matrix should be shown and explained first in the plenary, before participants go to their breakout groups. Group facilitators should be requested in advance, i.e., prior to the group discussion so they could prepare.

3.5 Session 5: Plenary Presentation and Reflections

Each group presented the group discussion results through their appointed representative. It found that during the group discussion they produced many valuable ideas on identification of issues faced and the recommendations. The results of the group discussion are found in Annex 5 of this report.

The Participants followed the session and listened to the results of the discussion of each group. Following the group presentation, to close the plenary presentations session, Prof. Mokbul Ahmad provided comments.

Due to the limited time, not all participants were able to comment or ask many questions on the results of the discussion. For future improvement, there should be more time given after the presentations so the results of the discussion can be further explored.

4. Participants' Training Assessments

4.1 Pre-Event Assessment

Thirty two individuals registered for the training. The expectations of the participants included the following: to strengthen knowledge on CCA action in CT region and policy development. One participant mentioned a preference to observe how CCA training module is geared towards local government capacity building.

Below is table on expectations from this training (Annex 3).

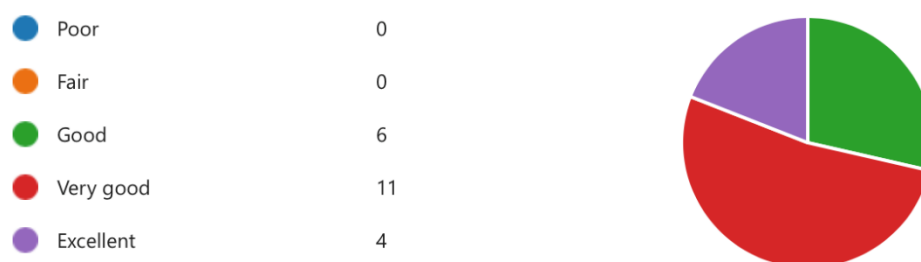
What do you expect to learn from this training?
Climate Change Adaptation in CT region
Strengthen Knowledge and Skills in addressing Climate Change Adaptation
Learn CCA and fisheries especially for SSF
More details about the status of climate change adaptation
Opportunities to revisit the LEAP and REAP
role of local leaders in resources mobilization for CC responses
Issues and impact of climate change and basic knowledge for a policy development
To learn more about CCA, its effective design and implementation
Coastal resilience for climate change
to keep abreast of the science being applied to CCA

Increase knowledge for reference to determining climate change adaptation policies on coasts and small islands
To observe how CCA training module is geared towards Local Govts capacity building.
I want to get an overview of the climate change adaptation efforts that have been carried out by CTI CFF member countries
To be able to learn on field the maladaptation practices
Gain more understanding and knowledge about CTI
advance topics on adaptation
good practices on CCA measures and technologies
about the key problems of Cc and Fishery
To be updated of initiatives in the region
knowledge and way forward on climate change
New knowledge related to climate change adaptation action and potential collaboration within CTI CFF members

4.2 Post-Event Assessment

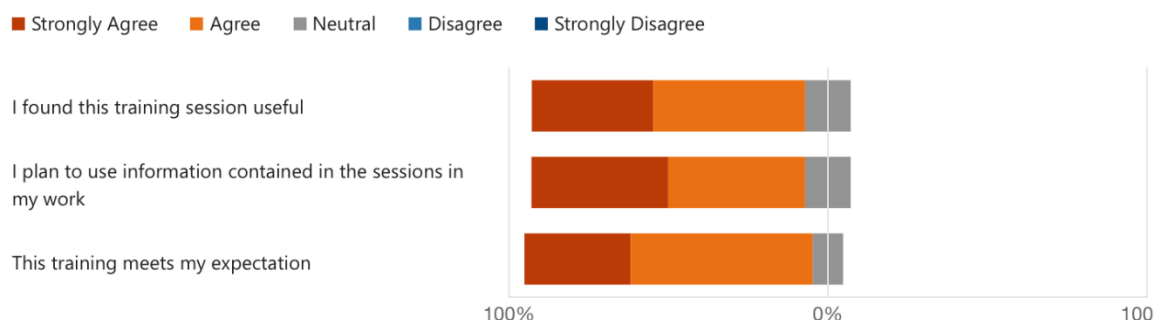
The graphic below shows the results of the post-event assessment.

How would you rate the quality, content and the overall process of the training session?



It shows that 100% of participants were satisfied to the training. More than 50% stated that the quality, content and the overall process of the training session was very good, 19% excellent, and 6% good.

Please indicate your level of agreement on the statement below



As many as 90 % participants agreed that the training met their expectation while the rest were neutral. Eighty percent (80%) of the participants stated that they plan to use the information they obtained from the training in their work.

A participant mentioned that his/her curiosity about climate change adaptation actions and efforts to deal with climate change impacts in CTI-CFF countries has been answered.

5. Comments and Recommendations

The training on Climate Change Adaptation went well as planned. The training gained positive responses from participants according to the results of the post-event assessment. However, participation of the targeted group needs to be increased, particularly from the local governments of CT6 countries. However due to the online nature, logistic arrangements and resource requirements, it was a challenge to convene local government representatives from the 6 countries coming from different regions and localities.

Considering the time available, the training subject should be less to make more time for in depth discussion, and more time to interact between participants and resource persons, and vice versa.

Group discussion should be further prepared by assigning a group leader or facilitator before the discussion session begins. This is required when most participants have yet to know each other while the training duration is short (only few hours) and especially for the training using Zoom platform where the participants are not willing to open their camera.

Participants commented that the training should be longer and have more details and practical aspects so it is directly useful to local governments on CCA.

It would be great and timely to see fish and fisheries be mentioned in the CCA discussions in the CT Region, considering the reliance of CT countries on the ocean, SDG14 and the Blue Food Assessment (<https://bluefood.earth/>).

Annexes

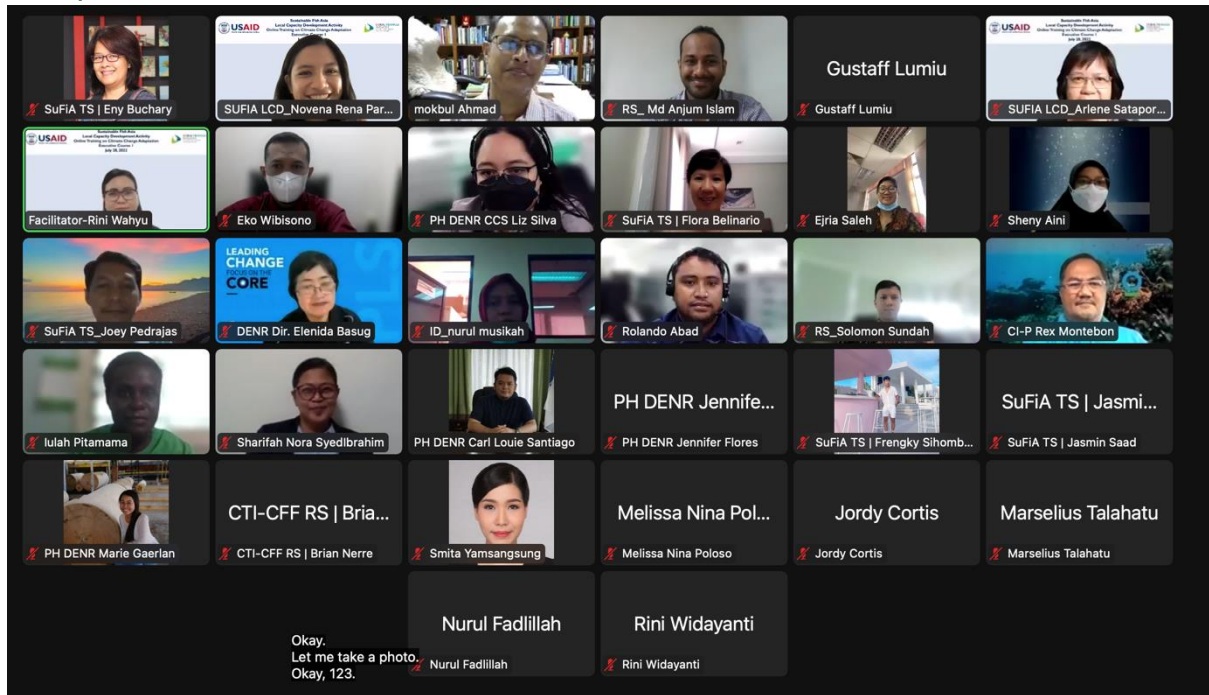
Annex I. List of Participants

No	First Name	Last Name	Organization	Job Title	Country/ Region	Gender
1	Eny	Buchary	USAID SuFiA TS	Regional Fisheries Science and Management Advisor	Indonesia	Female
2	Rini	Widayanti	KKP/MMAF	PELP Ahli Muda	Indonesia	Female
3	Nurul	Musikah	KLHK	PNS	Indonesia	Female
4	Sheny	Aini	Ministry of Environment and Forestry	Staff	Indonesia	Female
5	Nurul	Fadlillah	MoEF	Staf	Indonesia	Female
6	Md Anjum	Islam	RS CTI-CFF	MEM	Indonesia	Male
7	Frengky	Sihombing	USAID SUFIA TS	Regional Technical Expert Team	Indonesia	Male
8	Brian	Nerre	Regional Secretariat of CTI-CFF	FINANCE	Indonesia	Male
9	Marselius	Talahatu	Direktorat P4K	Management of Coastal and Marine Ecosystem	Indonesia	Male
10	Eko	Wibisono	Ministry of Marine Affairs and Fisheries	Analyst for marine and coastal ecosystem	Indonesia	Male
11	Gustaff	Lumiu	Regional Secretariat CTI CFF	director	Indonesia	Male
12	Solomon	Sundah	CTI-CFF Regional Secretariat	IT Officer	Indonesia	Male
13	Barnard Ceisaro	Purba	MMAF	Sub coordinator for Climate Change Adaptation	Indonesia	Male
14	Nurul	M	MMAF	CCA WG	Indonesia	Prefer Not to Say
15	Jasmin binti	Mohd Saad	USAID SuFiA TS	RETT Member and GESI Specialist	Malaysia	Female
16	Ejria	Saleh	University Malaysia Sabah	Associate Professor	Malaysia	Female
17	Sharifah Nora	SyedIbrahim	University Malaysia Sabah	Academician	Malaysia	Female
18	Flora	Belinario	SuFiA TS	RETT Team Member	Philippines	Female
19	Marie Vel	Gaerlan	DENR	Development Management Officer	Philippines	Female
20	Jennifer	De Leon-Flores	DENR	Sr. EMS	Philippines	Female
21	Gigi	Merilo	Department of Environment and Natural Resources	Supervising Environmental Management Specialist	Philippines	Female

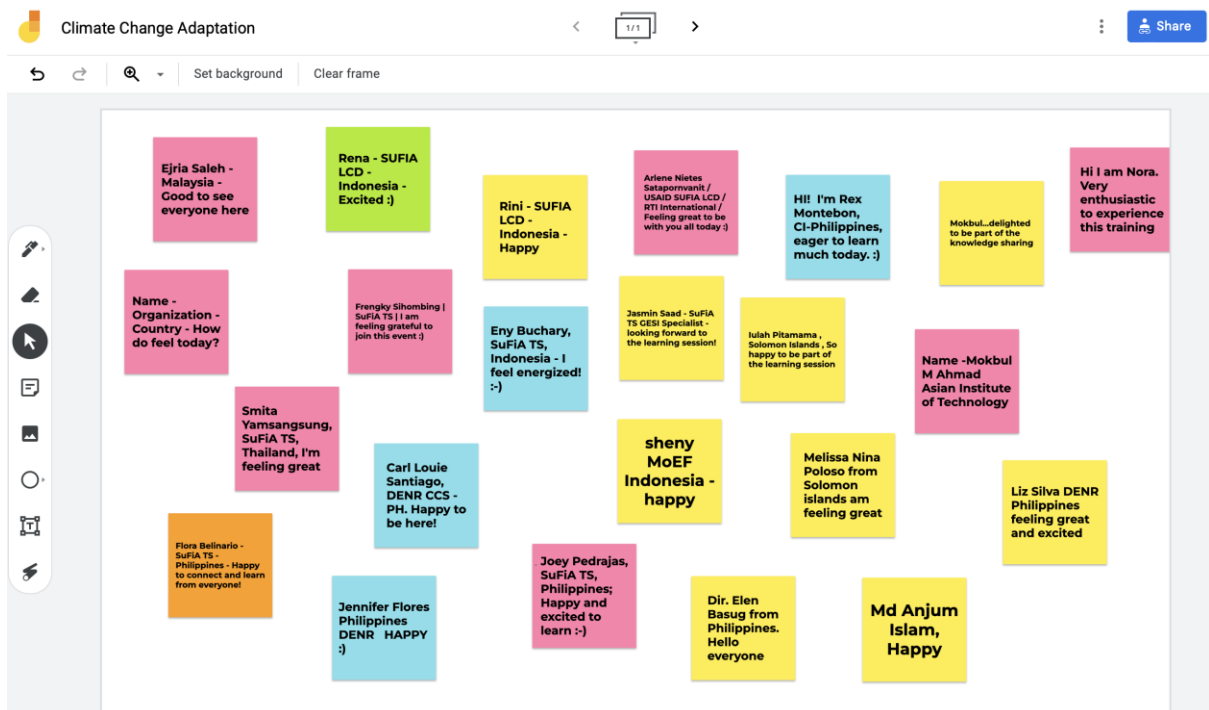
No	First Name	Last Name	Organization	Job Title	Country/ Region	Gender
22	Liz	Silva	Department of Environment and Natural Resources	Senior Environmental Management Specialist	Philippines	Female
23	Elenida	Basug	DENR Climate Change Service	Director	Philippines	Female
24	Augustus Rex	Montebon	CI Philippines Foundation, Inc.	Marine Program Director	Philippines	Male
25	Carl Louie	Santiago	DENR Climate Change Service	Science Research Specialist II	Philippines	Male
26	Rolando	Abad	Climate Change Service, Department of Environment and Natural Resources	Science Research Specialist	Philippines	Male
27	Joey	Pedrajas	USAID SuFiA TS	RETT Team Member	Philippines	Male
28	Melissa Nina	Poloso	Ministry of Fisheries and Marine Resources	Aquaculture Officer	Solomon Islands	Female
29	Iulah	Pitamama	Ministry Of Fisheries	Senior Fisheries Officer	Solomon Islands	Female
30	Jordy	Cortis	Solomon Islands government	Senior Aquaculture Officer	Solomon Islands	Female
31	Robson	Hevalao	Ministry of Fisheries and Marine Resources, Solomon Islands	Policy Officer	Solomon Islands	Male
32	Smita	Yamsangsung	SuFiA TS Tetra Tech	Operations, Logistics Manager	Thailand	Female

Annex 2. Group and Training Photos

Group Photo



Participants Introduction using Jamboard



Training session photo

Recording You are viewing mokbul Ahmad's screen View Options

Live Transcription (Closed Captioning) has been enabled Who can see this transcript? Recording On X

The challenges from climate Change

How much impact does food have?

Proportion of total greenhouse gas emissions from food

A quarter of global emissions come from food	Food 26%	Other greenhouse gas emissions 74%
More than half of food emissions come from animal products	Animal products 58%	Other food 42%
Half of all farmed animal emissions come from beef and lamb	Beef & lamb 50%	Other animal products 50%

Source: Poore & Nemecek (2018), Science **BBC**

Unmute Stop Video Security Participants 30 Chat Share Screen Record Live Transcript Breakout Rooms Reactions Apps Leave

SUFIA LCD_...
SUFIA LCD_Novena R...
Facilitator-Rini Wahyu
SUFIA LCD_Ariene Sa...
mokbul Ahmad
Gustaff Lumiu
Gustaff Lumiu
RS_ Md Anju...
RS_ Md Anjum Islam
Iulah Pitamama
Iulah Pitamama

Annex 3. Pre-Assessment Results

Gender	What do you expect to learn from this training?
M	Climate Change Adaptation in CT region
M	Strengthen Knowledge About Climate Change Adaptation
M	Learn CCA and fisheries especially for SSF
M	More details about the status of climate change adaptation
F	Opportunities to revisit the LEAP and REAP
F	role of local leaders in resources mobilization for CC responses
F	Issues and impact of climate change and basic knowledge for a policy development
M	Enhance Knowledge
F	TBC
F	To learn more about CCA, its effective design and implementation
F	Additional learning on CCA
F	Coastal resilience for climate change
M	to keep abreast of the science being applied to CCA
M	Increase knowledge for reference to determining climate change adaptation policies on coasts and small islands
F	Improve Knowledge on CCA
F	To observe how CCA training module is geared towards Local Govts capacity building.
M	I want to get an overview of the climate change adaptation efforts that have been carried out by CTI CFF member countries
F	enhance knowledge and skills in addressing climate change matters and on CTI-CFF
F	To be able to learn on field the maladaptation practices
F	Adaptations to Climate Change
F	Gain more understanding and knowledge about CTI
M	advance topics on adaptation
M	good practices on CCA measures and technologies
F	to learn more about the program
F	To learn more on climate change adaptation
M	Learning & comprehensive
M	Climate Change and Fisheries
M	yes
M	about the key problems of Cc and Fishery
F	To be updated of initiatives in the region
F	Learning

Annex 4. Post-Event Evaluation Results

How would you rate the quality, content and the overall process of the training session?	I found this training session useful	I plan to use information contained in the sessions in my work	This training meets my expectation	Additional comments:
Very good	Strongly Agree	Strongly Agree	Strongly Agree	Thank you for the great training!
Very good	Agree	Agree	Agree	Congratulations and looking forward to future related webinars.
Very good	Agree	Agree	Agree	Can you pls send me powerpoints of this Training
Good	Neutral	Neutral	Neutral	Too general. Nothing new. And need more Local govts participation as the training is targeted to LG. Hopefully next training will be more technical and directly useful to LG on CCA. Thank you.
Very good	Agree	Agree	Agree	More details of other aspects of CCA
Very good	Strongly Agree	Strongly Agree	Agree	Training should be longer i guess
Good	Agree	Agree	Agree	Would require follow-up on the recommendations under CCA TWG
Very good	Strongly Agree	Strongly Agree	Strongly Agree	Thank you SUFIA LCD team for providing a great training for us..
Good	Neutral	Neutral	Neutral	I hope the training is more practical
Excellent	Strongly Agree	Strongly Agree	Strongly Agree	Thank you. It's very useful online training.
Very good	Agree	Agree	Agree	some of my curiosity about climate change adaptation actions and efforts to deal with climate change impacts in CTI-CFF countries have been answered

Good	Agree	Agree	Agree	Congratulations SuFiA LCD!
Excellent	Strongly Agree	Strongly Agree	Strongly Agree	During the training, I was attending another physical meeting. I will review the recording video again. Thank you very much for organizing this course
Very good	Agree	Agree	Agree	It would be great and timely to see fish and fisheries be mentioned in the CCA discussions in the CT Region, considering the reliance of CT countries on the ocean, SDG14 and the Blue Food Assessment (https://bluefood.earth/).
Excellent	Strongly Agree	Strongly Agree	Strongly Agree	NA
Excellent	Strongly Agree	Strongly Agree	Strongly Agree	Excellent training session and excellent speaker
Good	Agree	Neutral	Agree	-
Very good	Agree	Strongly Agree	Agree	Learned a lot about Climate Change Adaptation
Very good	Agree	Strongly Agree	Strongly Agree	very good presentation, acquired knowledge and some way forward or way out for climate change adaption
Very good	Strongly Agree	Agree	Agree	More sharing of CCA best practices
Good	Neutral	Agree	Agree	There were interesting discussions but not much time to further tackle.

Annex 5. Results of the Group Discussions on Climate Change Issues Faced and Recommendations

GROUP I




What are the Climate Change issues faced?	Where is it located?	Who/which group are most impacted by the issues?	How will these issues be addressed? What are the recommended actions?	Who will be the responsible entity to best address these issues?	What are the resources needed?
Frequent and stronger typhoons or monsoon rains	<p>climate-vulnerable provinces in the Philippines (like Surigao del Sur, Surigao del Norte, Dinagat Island, Southern Leyte, Northern Samar, Eastern Samar, Samar, Zamboanga del Norte, Bukidnon, North Cotabato, Sultan Kudarat, Sarangani, Maguindanao, Sulu, Lanao del Sur, Catanduanes, Masbate, Sorsogon, Negros Oriental, Syquijor, Apayao, Kalinga, Mt. Province, Ifugao)</p> <p>Major Urban Centers like Metro Manila, Metro Cebu, Metro Iloilo, Metro Davao</p>	all sectors	information dissemination using different media early warning systems	<p>Weather bureaus</p> <p>Local government units</p> <p>national agencies</p> <p>civil service and non-government organizations</p> <p>Academe</p>	<p>technologies</p> <p>updated science based information</p> <p>updated communication systems</p>
Water security	Water stressed areas	Household (urban and rural)	<p>Integrated water resources management</p> <p>Improved water resources monitoring</p> <p>Reduce groundwater depletion</p>	NWRB, LGU, MGB, DOST	<p>updated maps</p> <p>science-based information</p> <p>new water technologies</p>
Water pollution	Wastewater discharges to water bodies (freshwater and marine waters)	Aquatic biodiversity	Application of ecosystem-based mitigation (i.e.,	DENR and EMB Regional Offices	<p>Mobilized financing for infrastructures</p> <p>Updated environmental</p>

What are the Climate Change issues faced?	Where is it located?	Who/which group are most impacted by the issues?	How will these issues be addressed? What are the recommended actions?	Who will be the responsible entity to best address these issues?	What are the resources needed?
			constructed wetlands), or green-grey infrastructure, installation of centralized wastewater treatment plants, effective implementation of waste management b		management and monitoring plans
Water pollution (WASH Sector)	Groundwater/drinking water	Household (especially in provincial or water stressed areas)	Improved public health protocols Drainage and sludge (including fecal) management Improved solid waste management	DOH, EMB	Strengthen access to sanitary facilities
Climate-induced displacement	climate-vulnerable communities/provinces	residents/communities	evacuate to safer areas, retrofitting of shelters, application of Ecosystem-based Adaptation/nature-based solutions	Local government units with the assistance from the science community/PAGASA and PDRRMO other National Government Agencies (Housing related agencies) Civil Society	Funding for housing materials, installation of early warning systems,
Rising sea levels	Olongapo, Roxas, Metro Manila, Bulacan, Cebu, Zamboanga, Iloilo	coastal communities, agriculture and fisheries sector	Evacuation to safe areas, Alternative livelihood, Improvement of houses, drainage system and use of engineering interventions and green	LGUs and concerned government agencies (DPWH, MMDA, DENR, DHSUD) and also private sector	Finance, housing and land, incentives, alternative source of income.

What are the Climate Change issues faced?	Where is it located?	Who/which group are most impacted by the issues?	How will these issues be addressed? What are the recommended actions?	Who will be the responsible entity to best address these issues?	What are the resources needed?
			solutions if applicable		
declining fish production	Philippines/ Southeast Asia	capture fisheries sector; aquaculture sector	Collaboration of various stakeholders	National and local governments; NGOs, Private Sectors;Academe	Fund for blue economy initiatives

Member of Group I

v **Group 1** 8

-  DENR Dir. Elenida Basug
-  PH DENR Carl Louie Santiago
- PD PH DENR CCS Liz Silva
- PD PH DENR Gigi Merilo
- PD PH DENR Jennifer Flores
-  PH DENR Marie Gaerlan
- RA Rolando Abad
- ST SuFiA TS_Joey Pedrajas

Group 2

What are the Climate Change issues faced?	Where is it located?	Who/which group are most impacted by the issues?	How will these issues be addressed? What are the recommended actions?	Who will be the responsible entity to best address these issues?	What are the resources needed?
<p>Marine and Fisheries Sector</p> <p>-Ecosystem: Coral reefs bleaching and fish because of the temperature increase</p> <p>-Coastal Area : Abrasion</p>	West Java, Indonesia	All sectors	<p>- Encourage the next generation to think and act sustainably</p> <p>- With larger population sizes and greater catch, fishing boats wouldn't have to use fishing gear for as long, and they could use more selective equipment</p>	<p>-Local Government</p> <p>-National Government</p> <p>-NGO, communities, organization and individual (person)</p> <p>-Universities</p>	<p>-Using social media as a platform to share the issues to make people in that are aware and take an action</p> <p>-The government share the real data to coastal society</p> <p>-Training and workshop to the society in west Java</p>

Member of Group 2

▼ **Group 2** 9

- BC Barnard Ceisaro Purba
- EW Eko Wibisono
- FW Facilitator-Rini Wahyu
- Im ID_nurul musikah
- MT Marselius Talahatu
- NF Nurul Fadlillah
- RW Rini Widayanti
- SA Sheny Aini
- SuFiA TS | Frengky Sihombing

Group 3

What are the Climate Change issues faced?	Where is it located?	Who/which group are most impacted by the issues?	How will these issues be addressed? What are the recommended actions?	Who will be the responsible entity to best address these issues?	What are the resources needed?
Eny-loss of land (abrasion) impact of current of ocean, development projects in coastal areas in some islands face this situation,	Indonesia	Coastal communities, loss of land, aquaculture ponds lost, fishing port, village houses gone	Government (local, prov, central) usually builds jetty structure – might need to study more scientifically / needs expertise to design the jetty and assign the location – not sure if this is the best solution	Collaborative – involves experts, communities themselves, displacement/ compensation	Funding – main challenge Political will – leaders, stakeholders
Inundation – sea level rise	Jakarta	Houses are now surrounded by water			Project in N. Jakarta to mitigate sea level rise impact, consultants from Netherlands, other countries – due to other reasons (politicize) – the project did not push through
Dr Nora- high SST (sea surface temp), coral bleachings quite frequent with less time for reefs recovery	CT region				

What are the Climate Change issues faced?	Where is it located?	Who/which group are most impacted by the issues?	How will these issues be addressed? What are the recommended actions?	Who will be the responsible entity to best address these issues?	What are the resources needed?
Smita - Issues: Fish in sea is reduced due to climate change	Thailand	Small-Scale fishers	Provide knowledge to SSF on how to grow and feed some fish species that are affected by climate change.	Government and NGOs	Funding for Capacity Training
Dr Nora – extreme weather	global				
Dr Eny - marine fish catch particularly small pelagics - has been adversely impacted (extreme La Nina vs El Nino) – higher during LNo / reduced during LNa (incidence longer)	Global, SEA, Indonesia examples	SSF – small pelagic fishers	Fisheries Management – cooperation from fishers themselves on SFM measures	FM authorities at local and national	Funding, science, inclusion of stakeholder in policy
Jasmin - Sea level rise in coastal areas (Sabah) affecting the stateless fishers community (of course affecting all of the coastal communities) -	Sabah	Stateless fisher communities/coastal communities – unable to move landwards	Cross-cutting – Institutional arrangements, esp land use Inter-agency collaborations to seek solutions – see point of view from each agency and groups Changing of fish landing catch – other FM measures – gear control, seasons	Government agencies to collab with NGOs – to understanding current issues and solutions	Need more technical support to justify / verify Will power and strong collab Funding will come later

What are the Climate Change issues faced?	Where is it located?	Who/which group are most impacted by the issues?	How will these issues be addressed? What are the recommended actions?	Who will be the responsible entity to best address these issues?	What are the resources needed?
Dr Nora - IPCC projection is that fish catches will decline significantly in tropical areas, including SEAsia.	SEA		Actions: mitigation? Adaptation: sustainable aquaculture, plus Restorations of damaged reef, mangroves, seagrass beds, mudflats etc		Need capacity building of frontliners (Local Govts, Municipal govts in terms of coastal and marine spatial planning

Member of Group 3

▼ **Group 3** 8

- ES Ejria Saleh
- GL Gustaff Lumiu
- RS RS_Solomon Sundah
- SN Sharifah Nora SyedIbrahim
- Smita Yamsangsung
- SUFIA LCD_Arlene Satapornvanit
- SuFiA TS | Eny Buchary
- ST SuFiA TS | Jasmin Saad

Group 4

What are the Climate Change issues faced?	Where is it located?	Who/which group are most impacted by the issues?	How will these issues be addressed? What are the recommended actions?	Who will be the responsible entity to best address these issues?	What are the resources needed?
Salinity	CT 6	Farmers, Fisheries (Coastal Community)	<ul style="list-style-type: none"> • More Awareness, • Land Use Planning 	<ul style="list-style-type: none"> • Local Govt, • NGOs 	<ul style="list-style-type: none"> • Funding, • Planning Support, • Awareness, • Research
Sea Level Rise	CT 6	Coastal Community	<ul style="list-style-type: none"> • Building Embankment 	<ul style="list-style-type: none"> • Nation/Local Govt, • Researcher 	<ul style="list-style-type: none"> • Funding, • Planning Support, • Awareness, • Research
Flooding	CT 6	Coastal Community	<ul style="list-style-type: none"> • Building Embankment, • Early Warning, • Land Use Planning 	<ul style="list-style-type: none"> • Local Govt, • NGOs 	<ul style="list-style-type: none"> • Funding, • Planning support, • Awareness, • Research
Typhoon and Cyclone	CT 6	Coastal Community	<ul style="list-style-type: none"> • Early Warning, • Evacuation Centers, • Early Actions, • Emergency Responses, • Quick Set-up Houses. 	<ul style="list-style-type: none"> • Nation Govt, • Local Govt, • NGOs 	<ul style="list-style-type: none"> • Funding, • Early Action Plan, • Awareness, • Research

Member of Group 4

▼ **Group 4** 6

- CR CI-P Rex Montebon
- CR CTI-CFF RS | Brian Nerre
- IP Iulah Pitamama
- mA mokbul Ahmad
- RM RS_ Md Anjum Islam
- SuFiA TS | Flora Belinario