

# 16<sup>th</sup> Senior Officials' Meeting (SOM-16)



CORAL TRIANGLE  
INITIATIVE  
ON CORAL REEFS, FISHERIES  
AND FOOD SECURITY



## SOLOMON ISLANDS COUNTRY REPORT

Ms. Agnetha Vave-Karamui.  
SINCC/MECDM

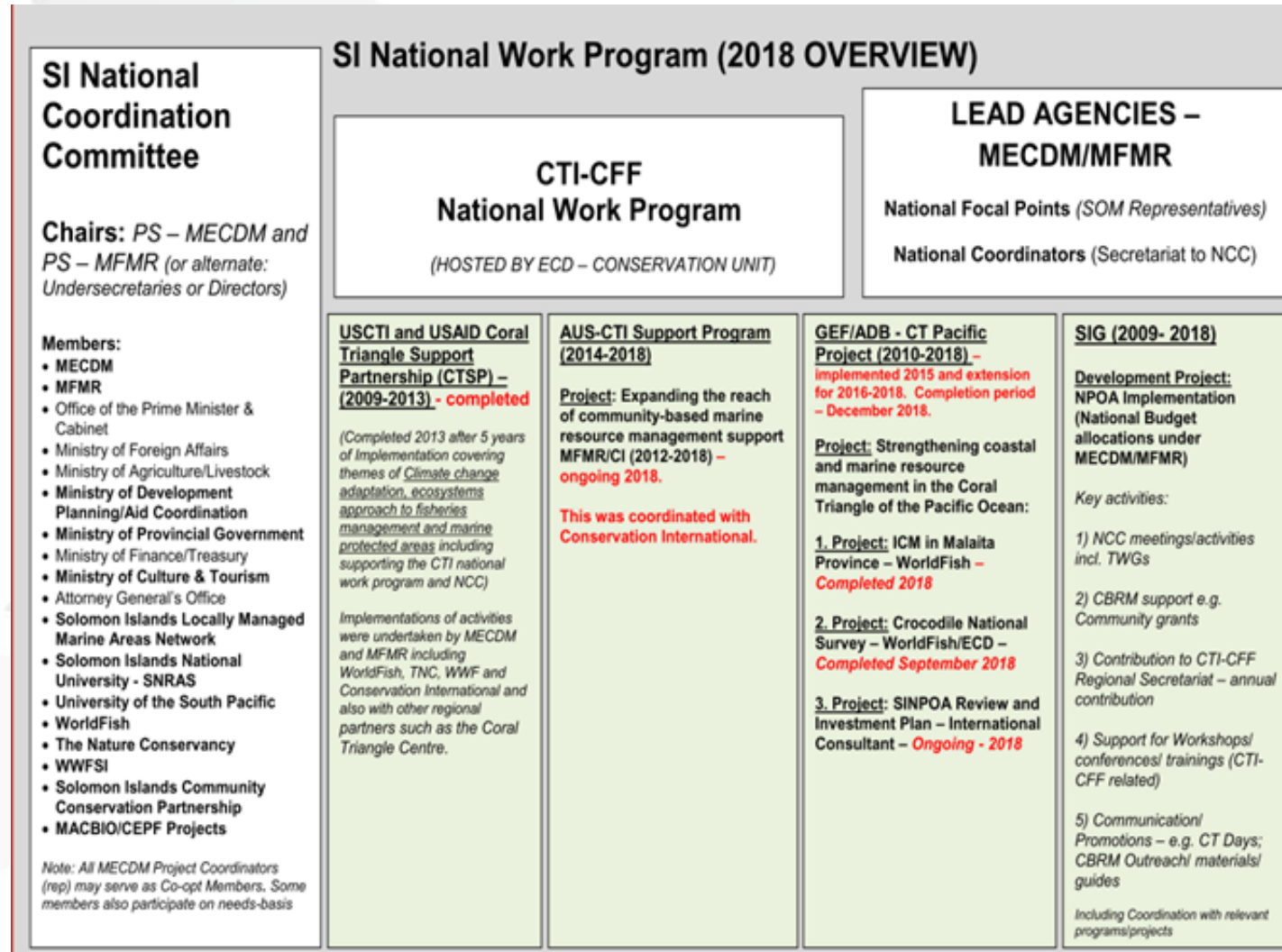
# Outline

- SINCC
- SINPOA progress
- Challenges/constraints
- 2022 roadmap



# I. Members (Agencies) of the National Coordinating Committees

- Remain as is...will be revised upon finalization of SINPOA (2022).



## II. Progress/Accomplishments towards National Plan of Action

### SEASCAPES

#### CTI-CFF National Programs

1. SOMACORE – pending status (BSSE)
2. SWG virtual participation (vice-chair) – develop BSSE TOR.

#### Programs/projects/activities related to CTI-CFF goals (but not directly budgeted under CTI-CFF programs)

1. Development of offshore Kavachi Marine Managed Area (in collaboration with WCS)
2. Development of national Marine Spatial Plan and Marine Spatial Planning
2. Development and inception of Maritime Compliance Project (in collaboration with Ministry of Foreign Affairs and IUCN)
3. Develop GEF-7 SAFE Project with UNDP- PPF phase (seascapes, CBRM and Threatened Species)
4. Develop GEF - CRRP Project proposal with WWF.
5. Increased focus on enforcement on PNG/SI border – reduce illegal trade of wildlife species (COVID measures)





# EA FM

## CTI-CFF National Programs

1. Finalization and endorsement of the Community Based Resource Management Strategy
2. Development of Community Fisheries Management Plans for CBRM sites.

## Programs/projects/activities related to CTI-CFF goals *(but not directly budgeted under CTI-CFF programs)*

1. Implement Open-season for Bechdermer
2. Develop BDM management plan for communities
3. Ongoing support to coastal community for seaweed farming.
4. Deployment of Fishing Aggregate Devices for community livelihood support.
5. Rehabilitation of Fisheries Centres to support fish market and storage for coastal communities.
4. Linking community fish market –marketing network

## MPA

### CTI-CFF National Programs

1. Ongoing support to MPA/LMMA communities and sites (more than 200 sites)
2. Initiate update of MPA/LMMA datasets (MECDM) - ongoing
2. GIS Trainings conducted for MPA practitioners
3. Enforcement and Compliance Trainings conducted for MPA/LMMA Managers, rangers and Management Committees (Isabel Province)

### Programs/projects/activities related to CTI-CFF goals *(but not directly budgeted under CTI-CFF programs)*

1. Conduct national consultations for KMMA as potential MPA (WCS)
2. Conduct MSP consultations with 9 Provinces, produce Zero Draft No-Take Map for Solomon Islands (30%), now scaled down to 17% No-Take Zone map for Solomon Islands – to be presented to Ocean12 for review.
3. Support ACMP Project for Eco-tourism development on site (Australia support).



# CLIMATE CHANGE ADAPTATION

## CTI-CFF National Programs

1. CCA National TWG meetings
2. Continue support towards CCA and mitigation programs at national , provincial and community level including awareness and education.

## Programs/projects/activities related to CTI-CFF goals *(but not directly budgeted under CTI-CFF programs)*

1. SIIVA conducted for Reef Islands, Temotu Province
2. Implement Third National Communication/Biennial Update Report
3. Implement PACRES Project
4. Implement of water harvesting system in Malaita Province
5. IFMP – protection of forest areas as part of CCA and mitigation
6. Development of Coral Reef Rescue Initiative program (GEF-funding)
7. Consultations on draft Climate Change Policy
3. Preparation and participation in COP26
4. Awareness for schools and villages on CC issues

(..further activities will be included in narrative report)



# THREATENED SPECIES

## CTI-CFF National Programs

1. Review of Sharks National Plan of Action with partners and stakeholders for finalization of the document.

### Programs/projects/activities related to CTI-CFF goals *(but not directly budgeted under CTI-CFF programs)*

1. Initiate review of Marine Turtle Action Plan
2. Conduct national assessments Sea cucumber for communities (Lord Howe, and Makira)

(additional activities to be included in narrative report)





## II. Challenges/Constraints Affecting Implementation of Activities

- Regional vs. National priorities – 2021 was focused on ensuring RPOA 2.0 , SPPM and HCA deliberations are completed.
- SINPOA expiration – no focus on regular SINCC meetings. Need to revitalise once NPOA is finalised. SINCC partners no regular reporting as no platform.
- Budgets – Re-prioritisation Policy – economy afloat and prevention of COVID19



## III. 2022 National Roadmap

### CTI-CFF National Programs

1. SINPOA Finalisation and submission to Cabinet
2. Continue MFMR/MECDM CBRM work program
3. Launch CBRM Upscaling Strategy
4. Conduct MAME Assessment for Arnavon Community Marine Park
5. Complete update of MPA/LMMAs datasets to upload into CT Atlas.
6. Develop national Blue Carbon profile for SI/Blue Economy positioning.

### Programs/projects/activities related to CTI-CFF goals *(but not directly budgeted under CTI-CFF programs)*

1. *Establishment of Kavachi Marine Managed area as national Protected Area (WCS support)*
2. *Completion and endorsement of Marine Spatial Plan (IUCN support)*
3. *Implement Maritime Compliance Project (IUCN Support)*
4. *Complete ecological assessment for potential MPAs (Russell Islands and Malaulalo Island)*
5. *Complete Sharks National Plan of Action*
6. *Complete revision of Marine Turtle Action Plan*
7. *Complete and endorse National Climate Change Policy*
8. **.. Others will be compiled in the narrative report.**



## IV. Potential Regional Program and Support Required

- BSSE /Seascapes – pending SOMACORE Project
- MPA – require training for staff and SINCC members to use CT Atlas
- CCA – support with CEPA and Blue Carbon awareness – support Adaptation programs for Communities
- MEWG – require training to use new reporting tools by RS
- WLF – trial WLF Competency Module , needs funding.  
Socialisation of GESI policy for SINCC members



## V. Publications

- Needs to be collated – will be reported in narrative report



## VI. Other Remarks







**Thank  
you!**

